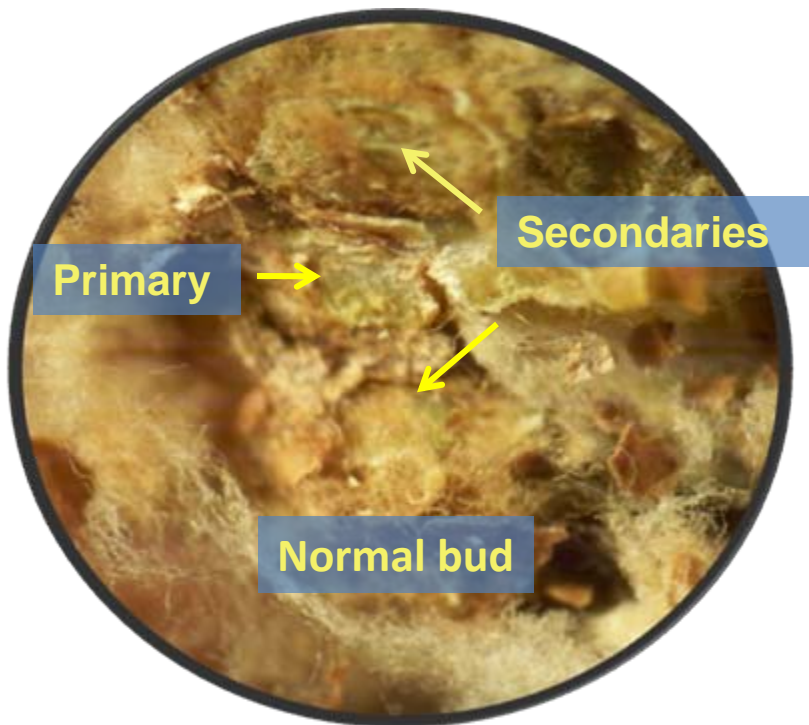




# ADVANCED AGRICULTURAL SERVICES, INC.

## Thompson Seedless Table

### Normal Healthy Bud



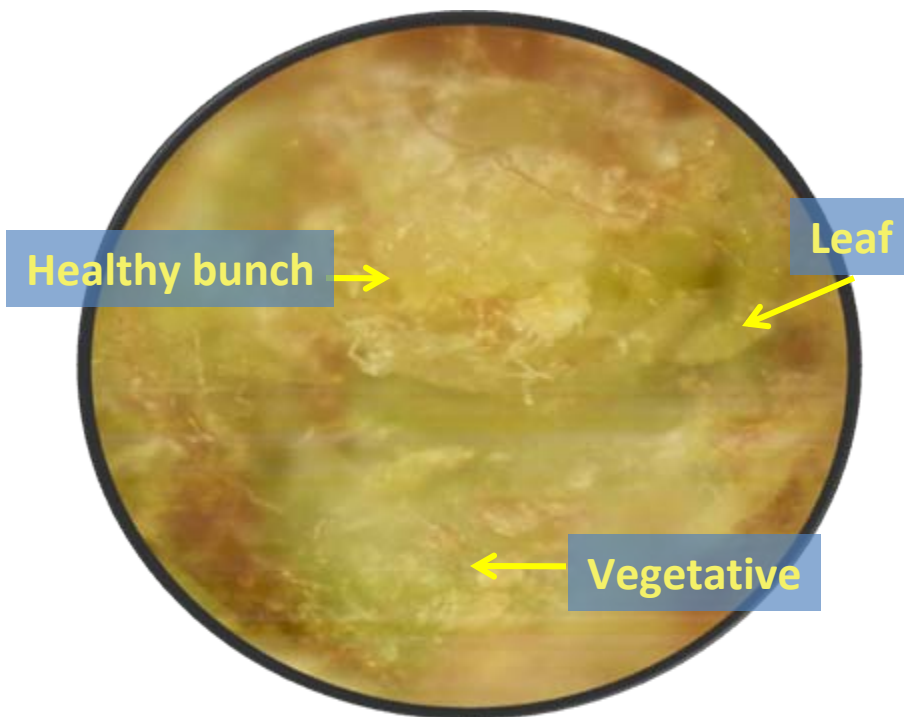
Normally the Thompson Seedless buds have one primary and two secondary bud positions. Most of the secondary positions are vegetative.



# ADVANCED AGRICULTURAL SERVICES, INC.

## Thompson Seedless Table

Healthy Bud with Single Bunch

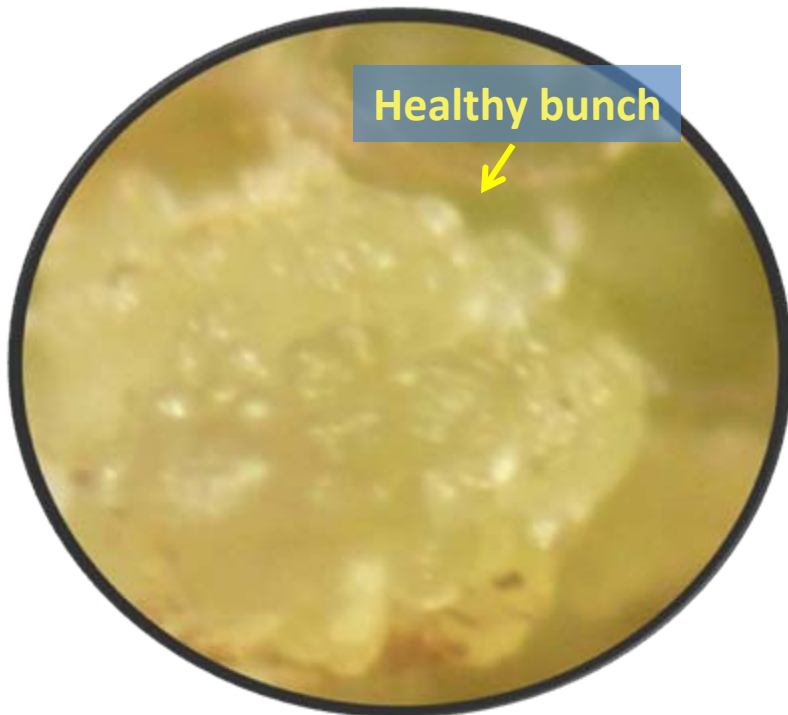


Here is a close-up of a healthy Thompson Seedless bud, showing the “bunch” primordium, or inflorescence, and the vegetative tip that will grow into a cane.



# ADVANCED AGRICULTURAL SERVICES, INC.

## Thompson Seedless Table Healthy bunch

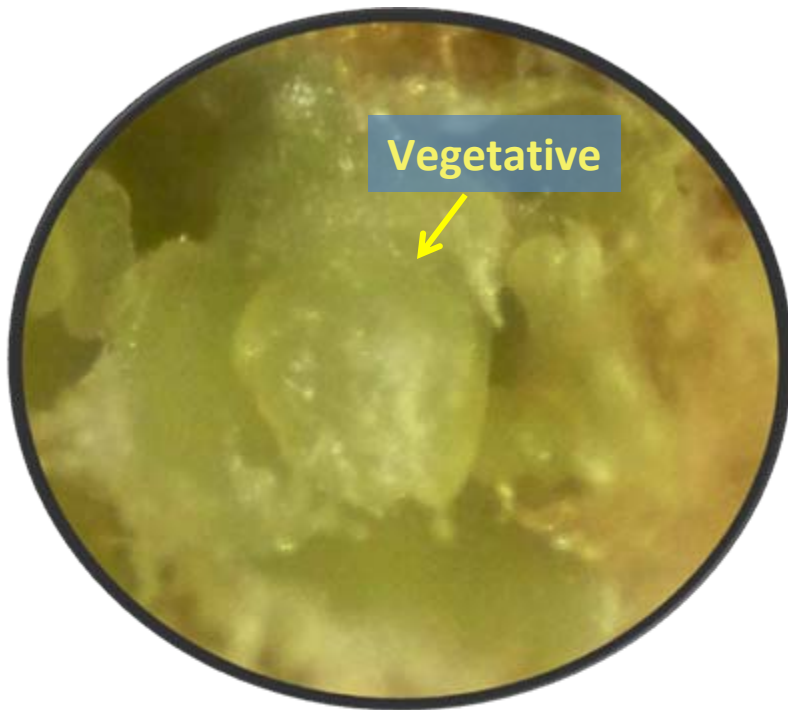


A close up of just the bunch.



# ADVANCED AGRICULTURAL SERVICES, INC.

## Thompson Seedless Table Standard Zero



A close up of a vegetative tip in a bud with no bunch, rated "0".



# ADVANCED AGRICULTURAL SERVICES, INC.

## Thompson Seedless Table

### Sick Bunch



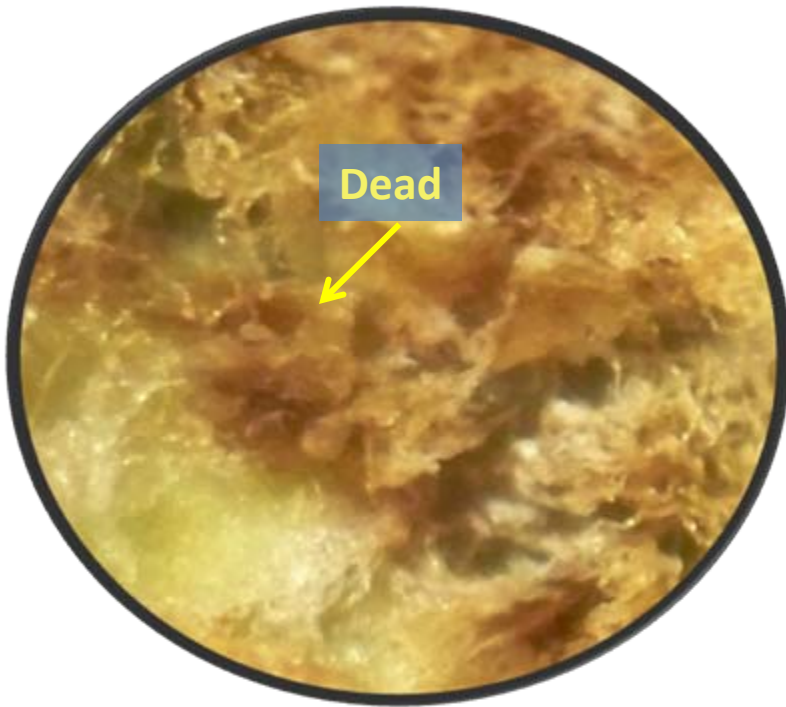
Close-up of a Sick Thompson Seedless bunch. The sick spot grows until the entire bud is dead.



# ADVANCED AGRICULTURAL SERVICES, INC.

## Thompson Seedless Table

Dead



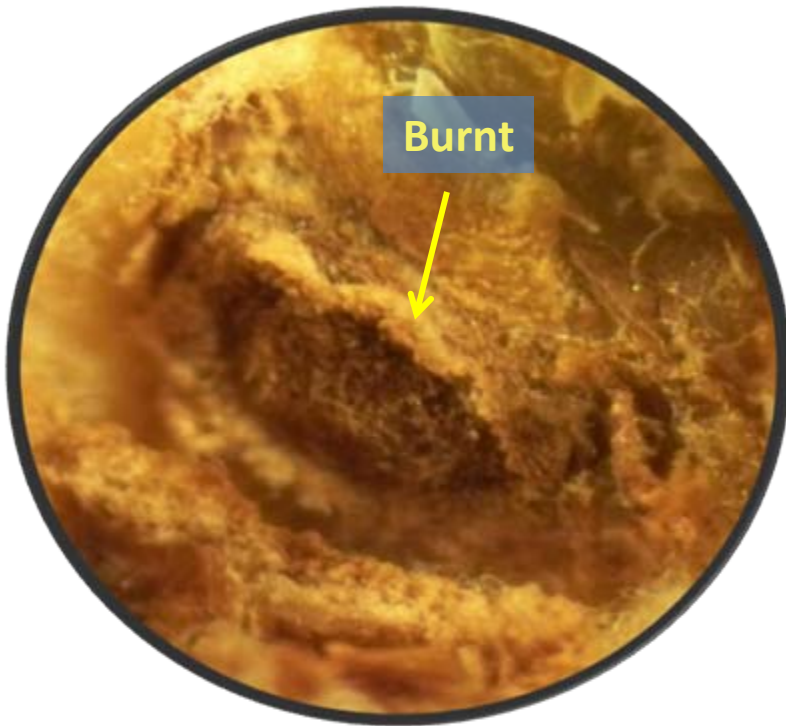
When most of the bunch  
is sick, we rate it as  
“Dead”.



# ADVANCED AGRICULTURAL SERVICES, INC.

## Thompson Seedless Table

### Burnt

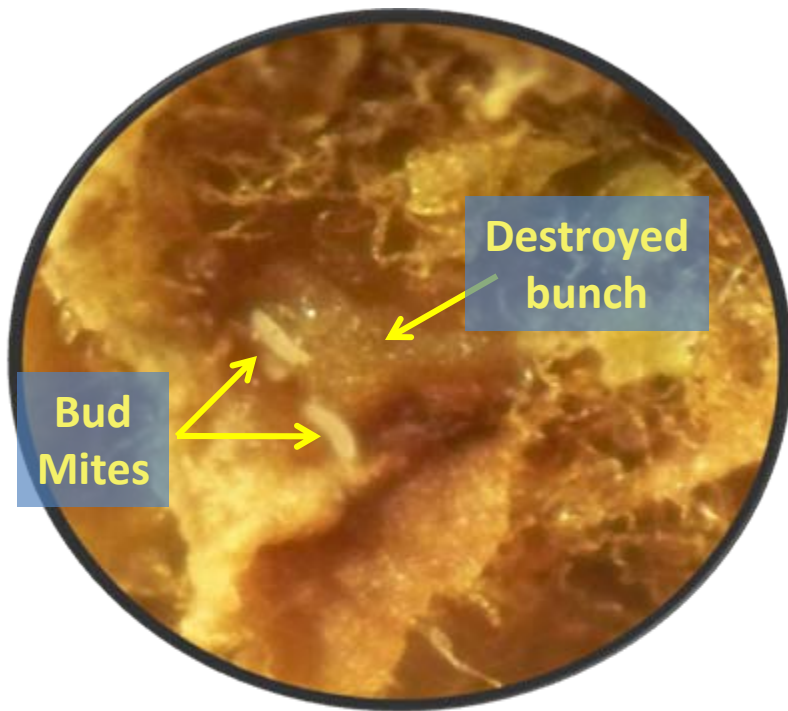


A “Burnt” bud results from necrosis at an abscission layer, usually after bloom. It is different from the “Sick-Dead” injury process.



# ADVANCED AGRICULTURAL SERVICES, INC.

## Thompson Seedless Table Bud Mite Feeding Damage

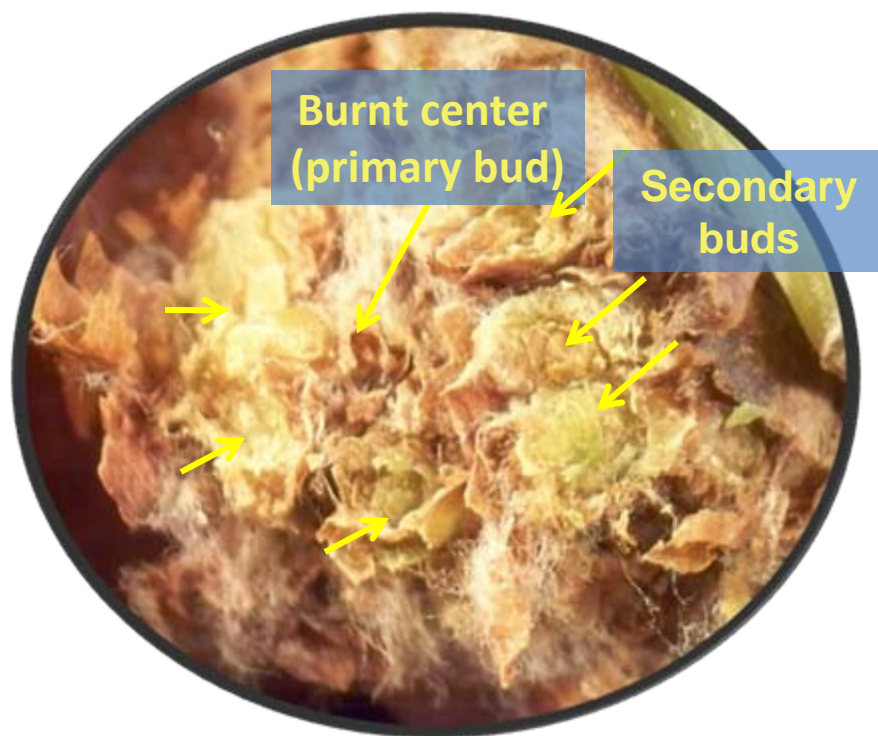


A close-up of a Thompson Seedless bunch with bubbly damage by bud mites. Two mites are visible feeding on the bunch. The mites also cause the darkening on the outer tissues. This entire bud will likely die.



# ADVANCED AGRICULTURAL SERVICES, INC.

## Thompson Seedless Table Possible Gibberellin Toxicity



Abnormal amount of secondary bud positions with a burnt primary in the center. Most of the secondary positions were vegetative with excessive amounts of bud mites. The occasional bunch was often injured or destroyed by the mites.